



55 Manor Park

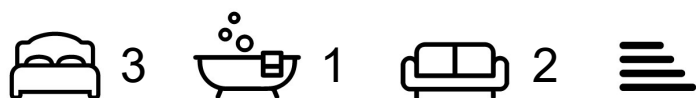
, Mirfield, WF14 0EP

Conveniently located a short distance from Mirfield town centre and local amenities, the property also enjoys excellent transport links, including nearby motorway networks and a railway station with services to Huddersfield, Leeds, Manchester and London. Externally, a driveway provides off-road parking and leads to a single garage. To the rear is a low-maintenance south-facing garden, mainly paved with attractive mature borders, creating a pleasant space to sit out and relax. A well-maintained bungalow in a convenient location, ideally suited to a range of buyers. NO CHAIN.

Offers Over £300,000

55 Manor Park

, Mirfield, WF14 0EP



- THREE BEDROOM DETACHED BUNGALOW
- CLOSE TO THE CENTRE OF MIRFIELD & LOCAL AMENITIES, MOTORWAY NETWORKS & PUBLIC TRANSPORT LINKS
- IMMACULATE & READY TO MOVE STRAIGHT INTO
- DRIVEWAY, GARAGE & GARDENS TO BOTH THE FRONT & REAR
- OFFERING SPACIOUS & FLEXIBLE ACCOMMODATION
- NO CHAIN

Dining Kitchen

Dining Room

Lounge

Inner Hall

Shower Room

Bedroom One

Bedroom Two

Bedroom Three

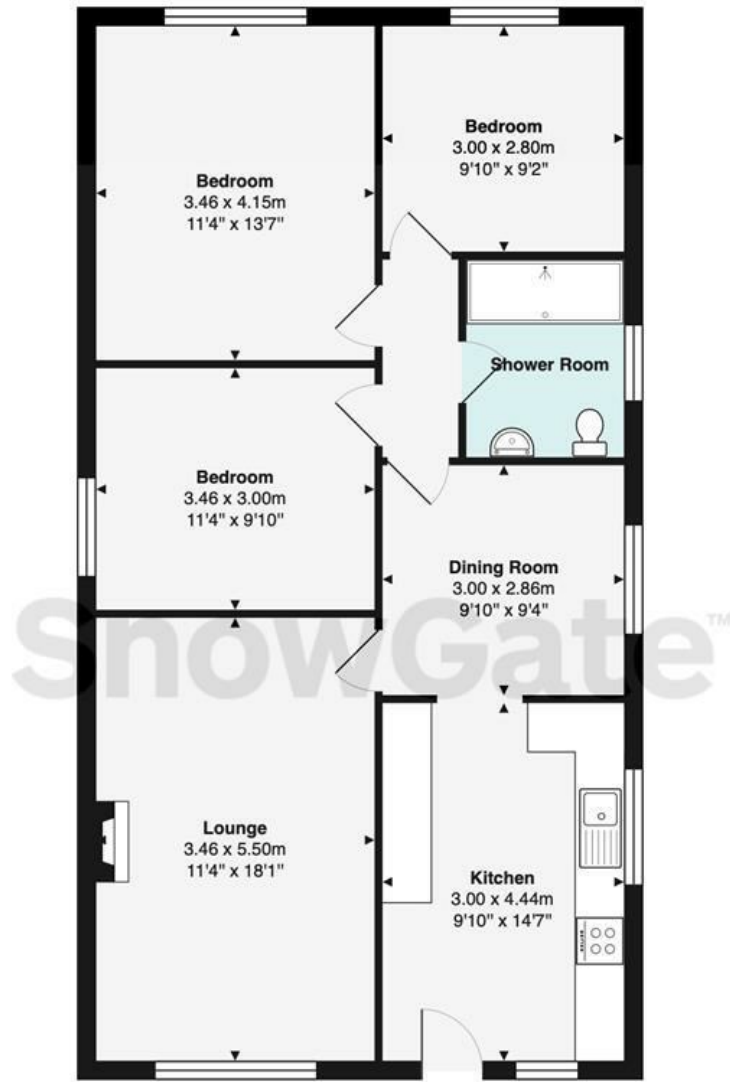
Garden. Driveway & Garden



Directions



Floor Plan



Manor Park, Mirfield, WF14 0EP

Total Area: 84.3 m² ... 907 ft²

Whilst every attempt has been made to ensure the accuracy of the floor plan, measurements of doors, windows and rooms and any other items are approximate and no responsibility is taken for any error, omissions or mis-statement. The plan is for illustrative purposes only and should be used as such.

These particulars, whilst believed to be accurate are set out as a general outline only for guidance and do not constitute any part of an offer or contract. Intending purchasers should not rely on them as statements of representation of fact, but must satisfy themselves by inspection or otherwise as to their accuracy. No person in this firm's employment has the authority to make or give any representation or warranty in respect of the property.

